

## Anti-LPAR1 hIgG1 Antibody(h309-4-A-BP1)

### Product Information

GM-87978AB-10	10 µg
GM-87978AB-100	100 µg
GM-87978AB-1000	1 mg

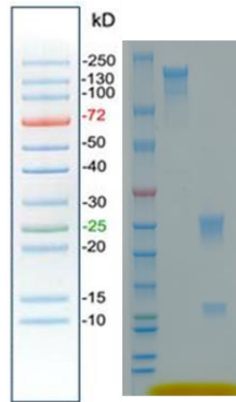
### Antibody Information

Species Reactivity	Human
Clone	h309-4-A-BP1
Source/Isotype	Monoclonal human IgG1, κ
Application	Flow cytometry
Specificity	Detects LPAR1
Gene	LPAR1
Other Names	EDG2, Gpcr26, LPA1, Mrec1.3, VZG1, edg-2, rec.1.3, vzg-1
Gene ID	1902 (human)
Background	LPAR1 is a cell surface receptor belonging to the G protein-coupled receptor (GPCR) family. It plays an important role in organism, especially in cell signaling, immune regulation and cell migration. LPAR1 mainly activates intracellular signaling pathways by recognizing and binding extracellular signaling molecules such as phosphatidic acid, which in turn affects cell behavior and physiological state.
Storage	Store at 2-8°C short term (1-2 weeks). Store at ≤ -20°C long term. Avoid repeated freeze-thaw.
Formulation	Phosphate-buffered solution, pH 7.2-7.4.
Endotoxin	< 1 EU/mg, determined by LAL gel clotting assay

## Data Examples

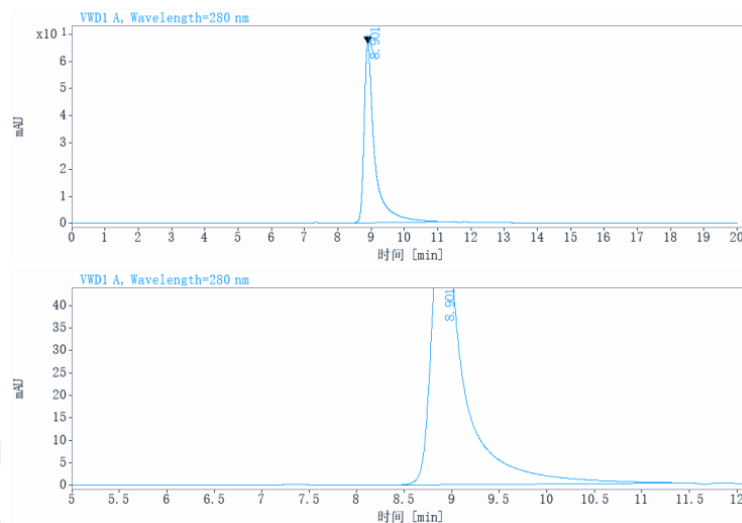
### Data Examples

#### SDS-PAGE



On SDS-PAGE under reducing (R)/non-reducing(N-R) condition. The gel was stained overnight with Coomassie Blue. The purity of the protein is greater than 95%.

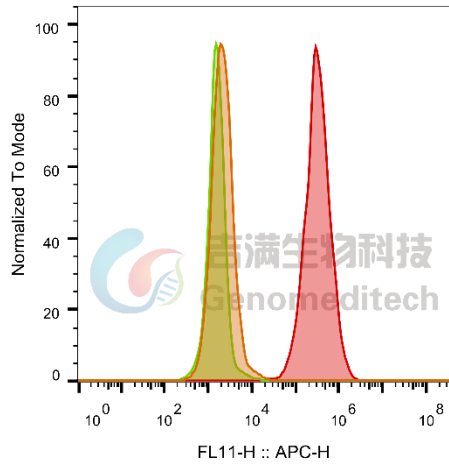
#### SEC-HPLC



The purity of this product is more than 95% verified by SEC-HPLC

Flow cytometry

H\_LPAR1 CHO-K1 Cell Line (Catalog # GM-C19369) was stained with Anti-LPAR1 hIgG1 Antibody(h309-4-A-BP1) (Catalog # GM-87978AB) or isotype control antibody, followed by anti-Human IgG APC-conjugated Secondary Antibody.



	SampleID	Geometric Mean : FL11-H
	CHO-K1 anti-LPAR1+APC-2nd Ab	2120
	CHO-K1 H_LPAR1 H_IgG+APC-2nd Ab	1631
	CHO-K1 H_LPAR1 anti-LPAR1+APC-2nd Ab	316031

Fig. FACS